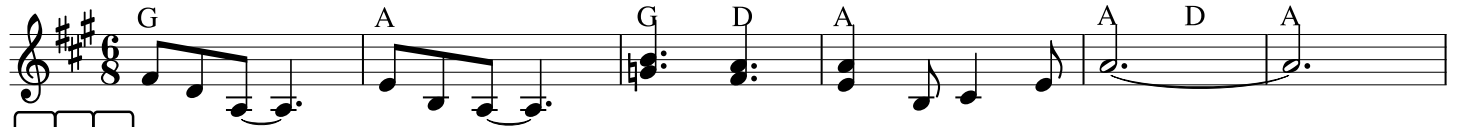


BOST ITURRI

M.Labeguerie

♩ = 70

intro



A B C



Bost i - tu - rri ba - zi - ren neu - re men - di - e - tan bost
Bost go - ros - tiz e - gi - na zen neu - re oi - ha - na nun -
Hil da u - hain a - ri - na pla - ia baz - te - rre - an hil



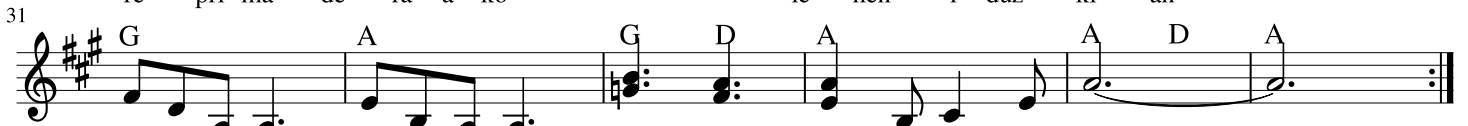
i - tu - rri kan - ta - ri a - lai a - rro - ke - tan e -
go ai - re gix - to - a bo - ta du ge - hie - na hil
da u - so gaz - te - a i - ra - tze go - rri - an hil



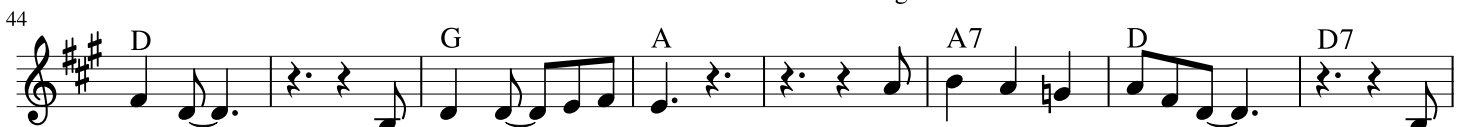
da - ten mai - te nu - en hei - en ur hotz - e - tan he -
da neu - re ze - ru - ko i - zar ez - ti - e - na ta
da neu - re u - me - a bi - de ku - ru - tze - an be -



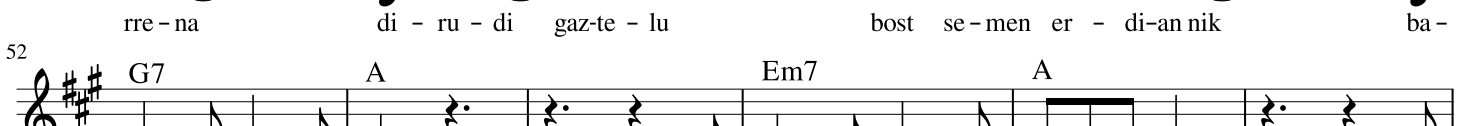
ta - rik ba - ten ka - an - ta a - gor - tu da be - tan
i - tza - lak ge - ro - oz - tik be - te daut ba - rre - na
re pri - ma - de - ra - a - ko le - hen i - duz - ki - an



Mun - da - rrai - no kas - ko - a a - rro - kak in - gu - ru men - di - rik e - de -



rre - na di - ru - di gaz - te - lu bost se - men er - di - an nik ba -



nu - en ur - gu - lu ze - ru - ko Jain - ko Ja - au - na bor -



tiz - ki jo nau - zu