

AITATXIREN OTOA

♩ = 168 Swing

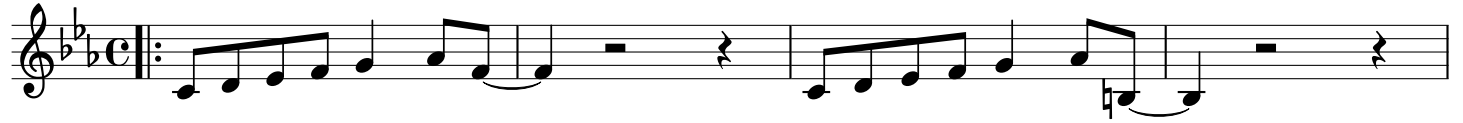
M.Labeguerie

intro instrumental
Cm

Dø

Cm

G9♭/B



5 Cm

Fm

E♭

Dø

Cm

3



9 **A C** Cm

Eø

Fm

B♭6

B♭5+

E♭Δ



Gu - re ai - ta - txi dau - ka o - to bat xar - man - ta
U - rrun-dik en - tzun e - ta o - to - a ez - tul - ka

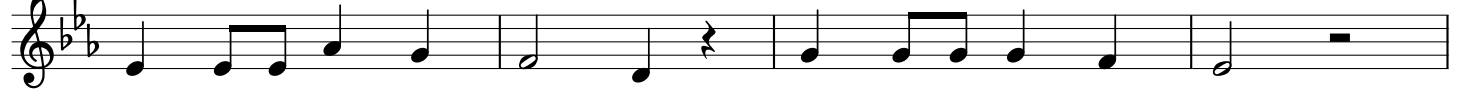
13 A♭Δ

Dø

G5+

G7

Cm



ur - tez a - be - rats e - ta mo - to - rrez ma - rran - ta
za - ku-rrak lo - tzen di - ra i - he - si sain - ga - ka

17 Cm

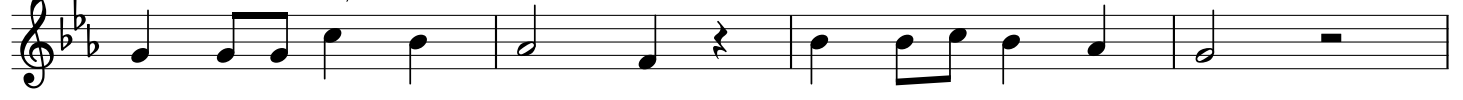
Eø

Fm

B♭

B♭5+

E♭Δ



jaz - ko ne - gu - az ge - ro zi - lo du ka - po - ta
le - her - tu - rik ba - di - tu oi - lo - ak e - hun - ka

21 A♭Δ

Dø

G7

Cm6



ho - be - re - na du nas - ki go - maz - ko tu - rru - ta
mu - txur - di - nak ha - mar bat jen - dar - mak ha - me - ka

25 **B D** Cm6

G9♭/B

Cm6

G9♭/B



Hau - xe da mo - to - rra de - na su ta ka - rra

29 Cm7

Fm

Fm

E♭6

Dø

Cm



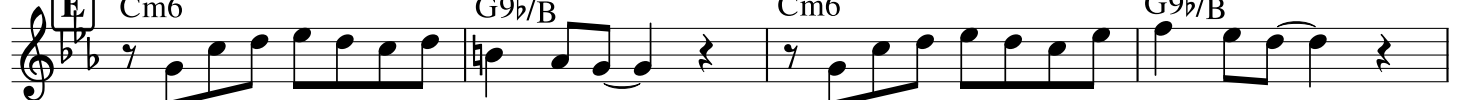
oi hu - nen in - da - rra jaus - ten due - la - rik pa - tta - rra

33 **E** Instrumental
Cm6

G9♭/B

Cm6

G9♭/B



37 Cm7

Fm 3

Fm

E♭

Dø

Cm



41 Cm Dø Cm G9 \flat /B

45 Cm Fm E \flat Dø Cm₃

49 **F** Cm Eø Fm B \flat 6 B \flat 5+ E \flat Δ

Gu - re ai - ta - txi bai - no kon - ten - ta - go de - nik

53 A \flat Δ Dø G5+ G7 Cm

be - re ka - rro - az ez da A - me - ri - ka - no - rik

57 Cm Eø Fm B \flat 6 B \flat 5+ E \flat Δ

lu - zaz e - du - ki di - tzan bi bi - ak bi - zi - rik

61 A \flat Δ Dø G7 Cm6

Jaun goi - ko - a - ri o - toitz e - gi - ten di - ot nik

65 **G** Cm6 G9 \flat /B Cm6 G9 \flat /B

Hau - xe da mo - to - rra de - na su ta ka - rra

69 Cm7 Fm Fm E \flat 6 1. Dø Cm

oi hu - nen in - da - rra jaus - ten due - la - rik pa - tta - rra

73 2. Dø Cm Fm E \flat Dø Cm6

pa - tta - rra

78

79